

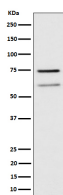
bsm-62672R**[Primary Antibody]**

www.bioss.com.cn

sales@bioss.com.cn

techsupport@bioss.com.cn

400-901-9800

WDR1 Recombinant Rabbit mAb**— DATASHEET —****Host:** Rabbit**Isotype:** IgG**Clonality:** Recombinant**GeneID:** 9948**SWISS:** O75083**Target:** WDR1**Immunogen:** A synthesized peptide derived from human WDR1: 321-350.**Purification:** affinity purified by Protein A**Storage:** 10mM phosphate buffered saline(pH 7.4) with 150mM sodium chloride, 0.05% BSA, 0.02% Proclin300 and 50% glycerol. Store at 4°C for short term. Store at -20°C for long term. Avoid repeated freeze/thaw cycles.**Background:** Induces disassembly of actin filaments in conjunction with ADF/cofilin family proteins. Enhances cofilin-mediated actin severing. Involved in cytokinesis. Involved in chemotactic cell migration by restricting lamellipodial membrane protrusions. Involved in myocardium sarcomere organization. Required for cardiomyocyte growth and maintenance.**Applications:** **WB** (1:1000-1:2000)**IHC-P** (1:100-1:200)**IHC-F** (1:100-1:200)**IF** (1:50-1:200)**ICC/IF** (1:50-1:200)**Reactivity:** Human**Predicted MW.:** 66**— VALIDATION IMAGES —**

Western blot analysis of Raji cell lysate. Using WDR1 (bsm-62672R) monoclonal antibody at 1:1000 dilution and 4°C overnight incubation. Followed by conjugated secondary antibody incubation at r.t. for 60 min.