

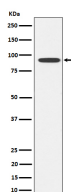
bsm-62663R**[Primary Antibody]****BioSS**
ANTIBODIES

www.bioss.com.cn

sales@bioss.com.cn

techsupport@bioss.com.cn

400-901-9800

GlyT2 Recombinant Rabbit mAb**— DATASHEET —****Host:** Rabbit**Isotype:** IgG**Clonality:** Recombinant**GeneID:** 9152**SWISS:** Q9Y345**Target:** GlyT2**Immunogen:** A synthesized peptide derived from human GlyT2: 301-336.**Purification:** affinity purified by Protein A**Storage:** 10mM phosphate buffered saline(pH 7.4) with 150mM sodium chloride, 0.05% BSA, 0.02% Proclin300 and 50% glycerol.
Store at 4°C for short term. Store at -20°C for long term. Avoid repeated freeze/thaw cycles.**Background:** Sodium- and chloride-dependent glycine transporter. Terminates the action of glycine by its high affinity sodium-dependent reuptake into presynaptic terminals. May be responsible for the termination of neurotransmission at strychnine-sensitive glycinergic synapses.**Applications:** WB (1:1000-1:2000)**Reactivity:** Human, Mouse, Rat**Predicted MW.:** 87**— VALIDATION IMAGES —**

Western blot analysis of SH-SY5Y cell lysate.
Using GlyT2 (bsm-62663R) monoclonal antibody
at 1:1000 dilution and 4°C overnight incubation.
Followed by conjugated secondary antibody
incubation at r.t. for 60 min.