

bsm-62661R**[Primary Antibody]****Bioss**
ANTIBODIES

www.bioss.com.cn

sales@bioss.com.cn

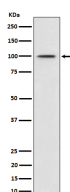
techsupport@bioss.com.cn

400-901-9800

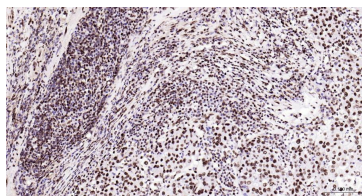
Phospho-MDM2 (Ser166) Recombinant Rabbit mAb**— DATASHEET —**

Host: Rabbit	Isotype: IgG
Clonality: Recombinant	CloneNo.: 10B6
GeneID: 4193	SWISS: Q00987
Target: Phospho-MDM2 (Ser166)	
Immunogen: A synthesized peptide derived from human MDM2 around the phosphorylation site of S166: AI-pS-ET.	
Purification: affinity purified by Protein A	
Storage: 10mM phosphate buffered saline(pH 7.4) with 150mM sodium chloride, 0.05% BSA, 0.02% Proclin300 and 50% glycerol. Store at 4°C for short term. Store at -20°C for long term. Avoid repeated freeze/thaw cycles.	
Background: E3 ubiquitin-protein ligase that mediates ubiquitination of p53/TP53, leading to its degradation by the proteasome.	

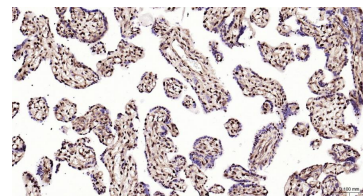
Applications: **WB** (1:500-2000)
IHC-P (1:100-500)
IHC-F (1:100-500)
IF (1:100-500)

Reactivity: Human**Predicted MW.:** 55**Subcellular Location:** Cytoplasm ,Nucleus**— VALIDATION IMAGES —**

Western blot analysis of MCF7 cell treated with IGF-1 lysate. Using Phospho-MDM2 (Ser166) (bsm-62661R) monoclonal antibody at 1:1000 dilution and 4°C overnight incubation. Followed by conjugated secondary antibody incubation at r.t. for 60 min.



Paraformaldehyde-fixed, paraffin embedded Human gastric cancer; Antigen retrieval by boiling in sodium citrate buffer (pH6.0) for 15 min; Antibody incubation with Phospho-MDM2 (Ser166) Monoclonal Antibody, Unconjugated(bsm-62661R) at 1:200 overnight at 4°C, followed by conjugation to the bs-0295G-HRP and DAB (C-0010) staining.



Paraformaldehyde-fixed, paraffin embedded Human placenta; Antigen retrieval by boiling in sodium citrate buffer (pH6.0) for 15 min; Antibody incubation with Phospho-MDM2 (Ser166) Monoclonal Antibody, Unconjugated(bsm-62661R) at 1:200 overnight at 4°C, followed by conjugation to the bs-0295G-HRP and DAB (C-0010) staining.