

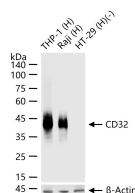
**bsm-62658R****[ Primary Antibody ]****Bioss**  
ANTIBODIES

www.bioss.com.cn

sales@bioss.com.cn

techsupport@bioss.com.cn

400-901-9800

**CD32 Recombinant Rabbit mAb****— DATASHEET —****Host:** Rabbit**Isotype:** IgG**Clonality:** Recombinant**CloneNo.:** 7A11**GeneID:** 2212**SWISS:** P12318**Target:** CD32**Immunogen:** A synthesized peptide derived from human CD32: 81-100.**Purification:** affinity purified by Protein A**Storage:** 10mM phosphate buffered saline(pH 7.4) with 150mM sodium chloride, 0.05% BSA, 0.02% Proclin300 and 50% glycerol. Store at 4°C for short term. Store at -20°C for long term. Avoid repeated freeze/thaw cycles.**Background:** Binds to the Fc region of immunoglobulins gamma. Low affinity receptor. By binding to IgG it initiates cellular responses against pathogens and soluble antigens. Promotes phagocytosis of opsonized antigens.**Applications:** WB (1:500-2000)**Reactivity:** Human**Predicted  
MW.:** 34-36**Subcellular  
Location:** Cell membrane**— VALIDATION IMAGES —**

25 ug total protein per lane of various lysates (see on figure) probed with CD32 monoclonal antibody, unconjugated (bsm-62658R) at 1:1000 dilution and 4°C overnight incubation. Followed by conjugated secondary antibody incubation at r.t. for 60 min.