

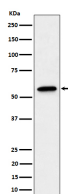
**bsm-62656R****[ Primary Antibody ]****Bioss**  
**ANTIBODIES**

www.bioss.com.cn

sales@bioss.com.cn

techsupport@bioss.com.cn

400-901-9800

**SF3A3 Recombinant Rabbit mAb****— DATASHEET —****Host:** Rabbit**Isotype:** IgG**Clonality:** Recombinant**GeneID:** 10946**SWISS:** Q12874**Target:** SF3A3**Immunogen:** A synthesized peptide derived from human SF3A3: 1-28.**Purification:** affinity purified by Protein A**Storage:** 10mM phosphate buffered saline(pH 7.4) with 150mM sodium chloride, 0.05% BSA, 0.02% Proclin300 and 50% glycerol. Store at 4°C for short term. Store at -20°C for long term. Avoid repeated freeze/thaw cycles.**Background:** SF3A3 is subunit 3 of the splicing factor SF3A. Splicing factor 3a is a heterotrimer consisting of subunits 1, 2 and 3, and is necessary for the conversion of 15S U2 snRNP into an active 17S particle that performs pre-mRNA splicing. SF3A interacts with the pre-mRNA branch site early during spliceosome formation.**Applications:** WB (1:1000-2000)**IHC-P** (1:100-200)**IHC-F** (1:100-200)**IF** (1:50-200)**ICC/IF** (1:50-200)**Reactivity:** Human, Mouse, Rat**Predicted  
MW.:** 59**Subcellular  
Location:** Nucleus**— VALIDATION IMAGES —**

Western blot analysis of A431 cell lysate. Using SF3A3 (bsm-62656R) monoclonal antibody at 1:1000 dilution and 4°C overnight incubation. Followed by conjugated secondary antibody incubation at r.t. for 60 min.