

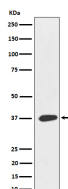
**bsm-62655R****[ Primary Antibody ]****BioSS**  
ANTIBODIES

www.bioss.com.cn

sales@bioss.com.cn

techsupport@bioss.com.cn

400-901-9800

**MAS1L Recombinant Rabbit mAb****— DATASHEET —****Host:** Rabbit**Isotype:** IgG**Clonality:** Recombinant**GeneID:** 116511**SWISS:** P35410**Target:** MAS1L**Immunogen:** A synthesized peptide derived from human MAS1L: 342-375.**Purification:** affinity purified by Protein A**Storage:** 10mM phosphate buffered saline(pH 7.4) with 150mM sodium chloride, 0.05% BSA, 0.02% Proclin300 and 50% glycerol.  
Store at 4°C for short term. Store at -20°C for long term. Avoid repeated freeze/thaw cycles.**Background:** Belongs to the G-protein coupled receptor 1 family. Mas subfamily.**Applications:** **WB** (1:1000-1:2000)  
**IP** (1:20-1:50)**Reactivity:** Human**Predicted  
MW.:** 42**Subcellular  
Location:** Cell membrane**— VALIDATION IMAGES —**

Western blot analysis of 293T cell lysate. Using MAS1L (bsm-62655R) monoclonal antibody at 1:1000 dilution and 4°C overnight incubation. Followed by conjugated secondary antibody incubation at r.t. for 60 min.