

bsm-62648R**[Primary Antibody]**

www.bioss.com.cn

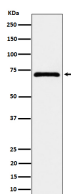
sales@bioss.com.cn

techsupport@bioss.com.cn

400-901-9800

EPHX2 Recombinant Rabbit mAb**— DATASHEET —**

Host: Rabbit	Isotype: IgG	Applications: WB (1:1000-1:2000)
Clonality: Recombinant		Reactivity: Human
GeneID: 2053	SWISS: P34913	
Target: EPHX2		
Immunogen: A synthesized peptide derived from human CEH: 16-45.		Predicted MW.: 63
Purification: affinity purified by Protein A		Subcellular Location: Cytoplasm
Storage: 10mM phosphate buffered saline(pH 7.4) with 150mM sodium chloride, 0.05% BSA, 0.02% Proclin300 and 50% glycerol. Store at 4°C for short term. Store at -20°C for long term. Avoid repeated freeze/thaw cycles.		
Background: Bifunctional enzyme. The C-terminal domain has epoxide hydrolase activity and acts on epoxides (alkene oxides, oxiranes) and arene oxides. Plays a role in xenobiotic metabolism by degrading potentially toxic epoxides. Also determines steady-state levels of physiological mediators.		

— VALIDATION IMAGES —

Western blot analysis of MCF7 cell lysate. Using EPHX2 (bsm-62648R) monoclonal antibody at 1:1000 dilution and 4°C overnight incubation. Followed by conjugated secondary antibody incubation at r.t. for 60 min.