

**bsm-62643R****[ Primary Antibody ]****SPINK5/LEKTI Recombinant Rabbit mAb****BioSS**  
**ANTIBODIES**

www.bioss.com.cn

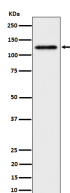
sales@bioss.com.cn

techsupport@bioss.com.cn

400-901-9800

**— DATASHEET —**

<b>Host:</b> Rabbit	<b>Isotype:</b> IgG	<b>Applications:</b> WB (1:1000-1:2000)
<b>Clonality:</b> Recombinant		<b>Reactivity:</b> Human, Mouse, Rat
<b>GeneID:</b> 11005	<b>SWISS:</b> Q9NQ38	
<b>Target:</b> SPINK5/LEKTI		
<b>Immunogen:</b> A synthesized peptide derived from human SPINK5: 150-200.		<b>Predicted MW.:</b> 121
<b>Purification:</b> affinity purified by Protein A		<b>Subcellular Location:</b> Extracellular matrix
<b>Storage:</b> 10mM phosphate buffered saline(pH 7.4) with 150mM sodium chloride, 0.05% BSA, 0.02% Proclin300 and 50% glycerol. Store at 4°C for short term. Store at -20°C for long term. Avoid repeated freeze/thaw cycles.		
<b>Background:</b> Serine protease inhibitor, probably important for the anti-inflammatory and/or antimicrobial protection of mucous epithelia. Contribute to the integrity and protective barrier function of the skin by regulating the activity of defense-activating and desquamation-involved proteases. Inhibits KLK5, it's major target, in a pH-dependent manner. Inhibits KLK7, KLK14 CASP14, and trypsin.		

**— VALIDATION IMAGES —**

Western blot analysis of HeLa cell lysate. Using SPINK5/LEKTI (bsm-62643R) monoclonal antibody at 1:1000 dilution and 4°C overnight incubation. Followed by conjugated secondary antibody incubation at r.t. for 60 min.