

**bsm-62639R****[ Primary Antibody ]****Bioss**  
ANTIBODIES

www.bioss.com.cn

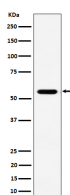
sales@bioss.com.cn

techsupport@bioss.com.cn

400-901-9800

**RNF14 Recombinant Rabbit mAb****— DATASHEET —**

<b>Host:</b> Rabbit	<b>Isotype:</b> IgG	<b>Applications:</b> WB (1:1000-2000)
<b>Clonality:</b> Recombinant		<b>Reactivity:</b> Human, Mouse, Rat
<b>GeneID:</b> 9604	<b>SWISS:</b> Q9UBS8	
<b>Target:</b> RNF14		
<b>Immunogen:</b> A synthesized peptide derived from human RNF14: 350-375.		<b>Predicted MW.:</b> 54
<b>Purification:</b> affinity purified by Protein A		<b>Subcellular Location:</b> Cytoplasm ,Nucleus
<b>Storage:</b> 10mM phosphate buffered saline(pH 7.4) with 150mM sodium chloride, 0.05% BSA, 0.02% Proclin300 and 50% glycerol. Store at 4°C for short term. Store at -20°C for long term. Avoid repeated freeze/thaw cycles.		
<b>Background:</b> E3 ubiquitin-protein ligase that plays a key role in the RNF14-RNF25 translation quality control pathway, a pathway that takes place when a ribosome has stalled during translation, and which promotes ubiquitination and degradation of translation factors on stalled ribosomes. Recruited to stalled ribosomes by the ribosome collision sensor GCN1 and mediates 'Lys-6'-linked ubiquitination of target proteins, leading to their degradation.		

**— VALIDATION IMAGES —**

Western blot analysis of Jurkat cell lysate. Using RNF14 (bsm-62639R) monoclonal antibody at 1:1000 dilution and 4°C overnight incubation. Followed by conjugated secondary antibody incubation at r.t. for 60 min.