

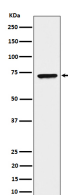
**bsm-62638R****[ Primary Antibody ]****BioSS**  
**ANTIBODIES**

www.bioss.com.cn

sales@bioss.com.cn

techsupport@bioss.com.cn

400-901-9800

**CTPS1 Recombinant Rabbit mAb****— DATASHEET —****Host:** Rabbit**Isotype:** IgG**Clonality:** Recombinant**GeneID:** 1503**SWISS:** P17812**Target:** CTPS1**Immunogen:** A synthesized peptide derived from human CTPS1: 250-290.**Purification:** affinity purified by Protein A**Storage:** 10mM phosphate buffered saline(pH 7.4) with 150mM sodium chloride, 0.05% BSA, 0.02% Proclin300 and 50% glycerol. Store at 4°C for short term. Store at -20°C for long term. Avoid repeated freeze/thaw cycles.**Background:** This enzyme is involved in the de novo synthesis of CTP, a precursor of DNA, RNA and phospholipids. Catalyzes the ATP-dependent amination of UTP to CTP with either L-glutamine or ammonia as a source of nitrogen. This enzyme and its product, CTP, play a crucial role in the proliferation of activated lymphocytes and therefore in immunity.**Applications:** WB (1:1000-2000)**Flow-Cyt** (1:50-100)**Reactivity:** Human, Mouse**Predicted  
MW.:** 67**Subcellular  
Location:** Cytoplasm**— VALIDATION IMAGES —**

Western blot analysis of HeLa cell lysate. Using CTPS1 (bsm-62638R) monoclonal antibody at 1:1000 dilution and 4°C overnight incubation. Followed by conjugated secondary antibody incubation at r.t. for 60 min.