

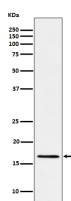
bsm-62637R**[Primary Antibody]**

www.bioss.com.cn

sales@bioss.com.cn

techsupport@bioss.com.cn

400-901-9800

RBM3 Recombinant Rabbit mAb**— DATASHEET —****Host:** Rabbit**Isotype:** IgG**Clonality:** Recombinant**GeneID:** 5935**SWISS:** P98179**Target:** RBM3**Immunogen:** A synthesized peptide derived from human RBM3: 131-157.**Purification:** affinity purified by Protein A**Storage:** 10mM phosphate buffered saline(pH 7.4) with 150mM sodium chloride, 0.05% BSA, 0.02% Proclin300 and 50% glycerol. Store at 4°C for short term. Store at -20°C for long term. Avoid repeated freeze/thaw cycles.**Background:** Cold-inducible mRNA binding protein that enhances global protein synthesis at both physiological and mild hypothermic temperatures. Reduces the relative abundance of microRNAs, when overexpressed. Enhances phosphorylation of translation initiation factors and active polysome formation.**Applications:** WB (1:1000-2000)**IHC-P** (1:100-200)**IHC-F** (1:100-200)**IF** (1:50-200)**Flow-Cyt** (1:50-100)**ICC/IF** (1:50-200)**Reactivity:** Human, Mouse**Predicted
MW.:** 17**Subcellular
Location:** Cytoplasm ,Nucleus**— VALIDATION IMAGES —**

Western blot analysis of Jurkat cell lysate. Using RBM3 (bsm-62637R) monoclonal antibody at 1:1000 dilution and 4°C overnight incubation. Followed by conjugated secondary antibody incubation at r.t. for 60 min.