

bsm-62635R**[Primary Antibody]****Bioss**
ANTIBODIES

www.bioss.com.cn

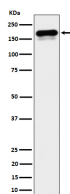
sales@bioss.com.cn

techsupport@bioss.com.cn

400-901-9800

CLIP1 Recombinant Rabbit mAb**— DATASHEET —**

Host: Rabbit	Isotype: IgG	Applications: WB (1:1000-2000) IHC-P (1:100-200) IHC-F (1:100-200) IF (1:100-200) Reactivity: Human Predicted MW.: 162 Subcellular Location: Cell membrane ,Cytoplasm
Clonality: Recombinant		
GeneID: 6249	SWISS: P30622	
Target: CLIP1		
Immunogen: A synthesized peptide derived from human CLIP1: 1400-1438.		
Purification: affinity purified by Protein A		
Storage: 10mM phosphate buffered saline(pH 7.4) with 150mM sodium chloride, 0.05% BSA, 0.02% Proclin300 and 50% glycerol. Store at 4°C for short term. Store at -20°C for long term. Avoid repeated freeze/thaw cycles.		
Background: Seems to be a intermediate filament associated protein that links endocytic vesicles to microtubules.		

— VALIDATION IMAGES —

Western blot analysis of HeLa cell lysate. Using CLIP1 (bsm-62635R) monoclonal antibody at 1:1000 dilution and 4°C overnight incubation. Followed by conjugated secondary antibody incubation at r.t. for 60 min.