

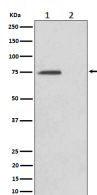
**bsm-62634R****[ Primary Antibody ]****BioSS**  
ANTIBODIES

www.bioss.com.cn

sales@bioss.com.cn

techsupport@bioss.com.cn

400-901-9800

**Phospho-EIF4B (Ser406) Recombinant Rabbit mAb****DATASHEET****Host:** Rabbit**Isotype:** IgG**Clonality:** Recombinant**GeneID:** 1975**SWISS:** P23588**Target:** Phospho-EIF4B (Ser406)**Immunogen:** A synthesized peptide derived from human eIF4B around the phosphorylation site of S406: HP-pS-WR.**Purification:** affinity purified by Protein A**Storage:** 10mM phosphate buffered saline(pH 7.4) with 150mM sodium chloride, 0.05% BSA, 0.02% Proclin300 and 50% glycerol. Store at 4°C for short term. Store at -20°C for long term. Avoid repeated freeze/thaw cycles.**Background:** Required for the binding of mRNA to ribosomes. Functions in close association with EIF4-F and EIF4-A. Binds near the 5'-terminal cap of mRNA in presence of EIF-4F and ATP. Promotes the ATPase activity and the ATP-dependent RNA unwinding activity of both EIF4-A and EIF4-F.**Applications:** WB (1:1000-1:2000)**IHC-P** (1:100-1:200)**IHC-F** (1:100-1:200)**IF** (1:100-1:200)**Reactivity:** Human, Mouse, Rat**Predicted MW.:** 69**Subcellular Location:** Cytoplasm**VALIDATION IMAGES**

Western blot analysis of (1) HeLa cell lysate; (2) HeLa cell treated with Alkaline Phosphatase lysate. Using Phospho-EIF4B (Ser406) (bsm-62634R) monoclonal antibody at 1:1000 dilution and 4°C overnight incubation. Followed by conjugated secondary antibody incubation at r.t. for 60 min.