

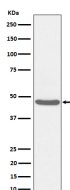
**bsm-62631R****[ Primary Antibody ]****BCKDH kinase Recombinant Rabbit mAb****BioSS**  
**ANTIBODIES**

www.bioss.com.cn

sales@bioss.com.cn

techsupport@bioss.com.cn

400-901-9800

**— DATASHEET —****Host:** Rabbit**Isotype:** IgG**Clonality:** Recombinant**GeneID:** 10295**SWISS:** O14874**Target:** BCKDH kinase**Immunogen:** A synthesized peptide derived from human BCKDH kinase: 50-100.**Purification:** affinity purified by Protein A**Storage:** 10mM phosphate buffered saline(pH 7.4) with 150mM sodium chloride, 0.05% BSA, 0.02% Proclin300 and 50% glycerol. Store at 4°C for short term. Store at -20°C for long term. Avoid repeated freeze/thaw cycles.**Background:** Serine/threonine-protein kinase component of macronutrients metabolism. Forms a functional kinase and phosphatase pair with PPM1K, serving as a metabolic regulatory node that coordinates branched-chain amino acids (BCAAs) with glucose and lipid metabolism via two distinct phosphoprotein targets: mitochondrial BCKDHA subunit of the branched-chain alpha-ketoacid dehydrogenase (BCKDH) complex and cytosolic ACLY, a lipogenic enzyme of Krebs cycle.**Applications:** WB (1:1000-1:2000)**Reactivity:** Human, Mouse, Rat**Predicted MW.:** 46**— VALIDATION IMAGES —**

Western blot analysis of HeLa cell lysate. Using BCKDH kinase (bsm-62631R) monoclonal antibody at 1:1000 dilution and 4°C overnight incubation. Followed by conjugated secondary antibody incubation at r.t. for 60 min.