

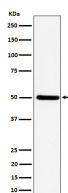
**bsm-62623R****[ Primary Antibody ]****UBA3 Recombinant Rabbit mAb****BioSS**  
**ANTIBODIES**

www.bioss.com.cn

sales@bioss.com.cn

techsupport@bioss.com.cn

400-901-9800

**— DATASHEET —****Host:** Rabbit**Isotype:** IgG**Clonality:** Recombinant**GeneID:** 9039**SWISS:** Q8TBC4**Target:** UBA3**Immunogen:** A synthesized peptide derived from human UBA3: full length.**Purification:** affinity purified by Protein A**Storage:** 10mM phosphate buffered saline(pH 7.4) with 150mM sodium chloride, 0.05% BSA, 0.02% Proclin300 and 50% glycerol. Store at 4°C for short term. Store at -20°C for long term. Avoid repeated freeze/thaw cycles.**Background:** Catalytic subunit of the dimeric UBA3-NAE1 E1 enzyme. E1 activates NEDD8 by first adenylating its C-terminal glycine residue with ATP, thereafter linking this residue to the side chain of the catalytic cysteine, yielding a NEDD8-UBA3 thioester and free AMP. E1 finally transfers NEDD8 to the catalytic cysteine of UBE2M. Down-regulates steroid receptor activity. Necessary for cell cycle progression.**Applications:** WB (1:1000-2000)**Reactivity:** Human, Mouse, Rat**Predicted MW.:** 52**— VALIDATION IMAGES —**

Western blot analysis of HeLa cell lysate. Using UBA3 (bsm-62623R) monoclonal antibody at 1:1000 dilution and 4°C overnight incubation. Followed by conjugated secondary antibody incubation at r.t. for 60 min.