

**bsm-62622R****[ Primary Antibody ]**

## Importin 9 Recombinant Rabbit mAb

**BioSS**  
ANTIBODIES

www.bioss.com.cn

sales@bioss.com.cn

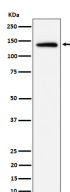
techsupport@bioss.com.cn

400-901-9800

### — DATASHEET —

**Host:** Rabbit**Isotype:** IgG**Clonality:** Recombinant**GeneID:** 55705**SWISS:** Q96P70**Target:** Importin 9**Immunogen:** A synthesized peptide derived from human Importin 9: 90-150/1041.**Purification:** affinity purified by Protein A**Storage:** 10mM phosphate buffered saline(pH 7.4) with 150mM sodium chloride, 0.05% BSA, 0.02% Proclin300 and 50% glycerol. Store at 4°C for short term. Store at -20°C for long term. Avoid repeated freeze/thaw cycles.**Background:** Nuclear transport receptor that mediates nuclear import of proteins, such as histones, proteasome and actin. Serves as receptor for nuclear localization signals (NLS) in cargo substrates. Is thought to mediate docking of the importin/substrate complex to the nuclear pore complex (NPC) through binding to nucleoporin and the complex is subsequently translocated through the pore by an energy requiring, Ran-dependent mechanism.**Applications:** WB (1:1000-2000)**IHC-P** (1:100-200)**IHC-F** (1:100-200)**IF** (1:100-200)**Reactivity:** Human**Predicted MW.:** 116

### — VALIDATION IMAGES —



Western blot analysis of HeLa cell lysate. Using Importin 9 (bsm-62622R) monoclonal antibody at 1:1000 dilution and 4°C overnight incubation. Followed by conjugated secondary antibody incubation at r.t. for 60 min.