

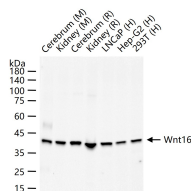
**bsm-62620R****[ Primary Antibody ]****BioSS**  
**ANTIBODIES**

www.bioss.com.cn

sales@bioss.com.cn

techsupport@bioss.com.cn

400-901-9800

**Wnt16 Recombinant Rabbit mAb****— DATASHEET —****Host:** Rabbit**Isotype:** IgG**Clonality:** Recombinant**CloneNo.:** 9F5**GeneID:** 51384**SWISS:** Q9UBV4**Target:** Wnt16**Immunogen:** A synthesized peptide derived from human Wnt16: 60-85.**Purification:** affinity purified by Protein A**Storage:** 10mM phosphate buffered saline(pH 7.4) with 150mM sodium chloride, 0.05% BSA, 0.02% Proclin300 and 50% glycerol. Store at 4°C for short term. Store at -20°C for long term. Avoid repeated freeze/thaw cycles.**Background:** Ligand for members of the frizzled family of seven transmembrane receptors. Probable developmental protein. May be a signaling molecule which affects the development of discrete regions of tissues. Is likely to signal over only few cell diameters.**Applications:** WB (1:500-2000)**Reactivity:** Human, Mouse, Rat**Predicted  
MW.:** 41**Subcellular  
Location:** Secreted ,Extracellular  
matrix**— VALIDATION IMAGES —**

25 ug total protein per lane of various lysates (see on figure) probed with Wnt16 monoclonal antibody, unconjugated (bsm-62620R) at 1:1000 dilution and 4°C overnight incubation. Followed by conjugated secondary antibody incubation at r.t. for 60 min.