

bsm-62618R**[Primary Antibody]****MADD Recombinant Rabbit mAb****Bioss**
ANTIBODIES

www.bioss.com.cn

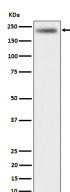
sales@bioss.com.cn

techsupport@bioss.com.cn

400-901-9800

— DATASHEET —

Host: Rabbit	Isotype: IgG	Applications: WB (1:1000-2000) IHC-P (1:100-200) IHC-F (1:100-200) IF (1:100-200) Reactivity: Human, Mouse, Rat Predicted MW.: 183 Subcellular Location: Cell membrane ,Cytoplasm
Clonality: Recombinant		
GeneID: 8567	SWISS: Q8WXG6	
Target: MADD		
Immunogen: A synthesized peptide derived from human MADD: 1611-1647.		
Purification: affinity purified by Protein A		
Storage: 10mM phosphate buffered saline(pH 7.4) with 150mM sodium chloride, 0.05% BSA, 0.02% Proclin300 and 50% glycerol. Store at 4°C for short term. Store at -20°C for long term. Avoid repeated freeze/thaw cycles.		
Background: Guanyl-nucleotide exchange factor that regulates small GTPases of the Rab family. Converts GDP-bound inactive form of RAB27A and RAB27B to the GTP-bound active forms.		

— VALIDATION IMAGES —

Western blot analysis of HeLa cell lysate. Using MADD (bsm-62618R) monoclonal antibody at 1:1000 dilution and 4°C overnight incubation. Followed by conjugated secondary antibody incubation at r.t. for 60 min.