

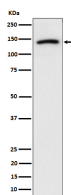
bsm-62617R**[Primary Antibody]****Cadherin 10 Recombinant Rabbit mAb****Bioss**
ANTIBODIES

www.bioss.com.cn

sales@bioss.com.cn

techsupport@bioss.com.cn

400-901-9800

— DATASHEET —**Host:** Rabbit**Isotype:** IgG**Applications:** WB (1:1000-2000)**Clonality:** Recombinant**Reactivity:** Human, Mouse, Rat**GeneID:** 1008**SWISS:** Q9Y6N8**Target:** Cadherin 10**Immunogen:** A synthesized peptide derived from human Cadherin 10: 750-788.**Purification:** affinity purified by Protein A**Storage:** 10mM phosphate buffered saline(pH 7.4) with 150mM sodium chloride, 0.05% BSA, 0.02% Proclin300 and 50% glycerol. Store at 4°C for short term. Store at -20°C for long term. Avoid repeated freeze/thaw cycles.**Predicted
MW.:** 88**Subcellular
Location:** Cell membrane**Background:** Cadherins are calcium-dependent cell adhesion proteins. They preferentially interact with themselves in a homophilic manner in connecting cells; cadherins may thus contribute to the sorting of heterogeneous cell types.**— VALIDATION IMAGES —**

Western blot analysis of U-87 MG cell lysate.
Using Cadherin 10 (bsm-62617R) monoclonal antibody at 1:1000 dilution and 4°C overnight incubation. Followed by conjugated secondary antibody incubation at r.t. for 60 min.