

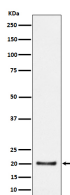
bsm-62615R**[Primary Antibody]****COPS8 Recombinant Rabbit mAb****BioSS**
ANTIBODIES

www.bioss.com.cn

sales@bioss.com.cn

techsupport@bioss.com.cn

400-901-9800

DATASHEET**Host:** Rabbit**Isotype:** IgG**Clonality:** Recombinant**GeneID:** 10920**SWISS:** Q99627**Target:** COPS8**Immunogen:** A synthesized peptide derived from human COPS8: 180-209.**Purification:** affinity purified by Protein A**Storage:** 10mM phosphate buffered saline(pH 7.4) with 150mM sodium chloride, 0.05% BSA, 0.02% Proclin300 and 50% glycerol. Store at 4°C for short term. Store at -20°C for long term. Avoid repeated freeze/thaw cycles.**Background:** Component of the COP9 signalosome complex (CSN), a complex involved in various cellular and developmental processes. The CSN complex is an essential regulator of the ubiquitin (Ubl) conjugation pathway by mediating the deneddylation of the cullin subunits of SCF-type E3 ligase complexes, leading to decrease the Ubl ligase activity of SCF-type complexes such as SCF, CSA or DDB2.**Applications:** **WB** (1:1000-2000)**IHC-P** (1:100-200)**IHC-F** (1:100-200)**IF** (1:100-200)**Reactivity:** Human, Mouse, Rat**Predicted
MW.:** 23**Subcellular
Location:** Cytoplasm ,Nucleus**VALIDATION IMAGES**

Western blot analysis of HepG2 cell lysate. Using COPS8 (bsm-62615R) monoclonal antibody at 1:1000 dilution and 4°C overnight incubation. Followed by conjugated secondary antibody incubation at r.t. for 60 min.