

bsm-62614R**[Primary Antibody]****phospho-TAOK 1/2/3 (S181/S181/S177)
Recombinant Rabbit mAb****BioSS**
ANTIBODIES

www.bioss.com.cn

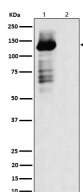
sales@bioss.com.cn

techsupport@bioss.com.cn

400-901-9800

— DATASHEET —

Host: Rabbit	Isotype: IgG	Applications: WB (1:1000-2000) IHC-P (1:100-200) IHC-F (1:100-200) IF (1:100-200) Reactivity: Human, Mouse, Rat Predicted MW.: 116 Subcellular Location: Cytoplasm ,Nucleus
Clonality: Recombinant		
GeneID: 9344	SWISS: Q9UL54	
Target: TAOK 1/2/3 (S181/S181/S177)		
Immunogen: A synthesized peptide derived from human TAOK 1/2/3 around the phosphorylation site of S181/S181/S177: AN-pS-FV.		
Purification: affinity purified by Protein A		
Storage: 10mM phosphate buffered saline(pH 7.4) with 150mM sodium chloride, 0.05% BSA, 0.02% Proclin300 and 50% glycerol. Store at 4°C for short term. Store at -20°C for long term. Avoid repeated freeze/thaw cycles.		
Background: Serine/threonine-protein kinase involved in various processes such as p38/MAPK14 stress-activated MAPK cascade, DNA damage response and regulation of cytoskeleton stability. Phosphorylates MAP2K3, MAP2K6 and MARK2. Acts as an activator of the p38/MAPK14 stress-activated MAPK cascade by mediating phosphorylation and subsequent activation of the upstream MAP2K3 and MAP2K6 kinases. Involved in G-protein coupled receptor signaling to p38/MAPK14.		

— VALIDATION IMAGES —

Western blot analysis of (1) 293 cell lysate; (2) 293 cell treated with Lambda Phosphatase lysate. Using Phospho-TAOK 1/2/3 (S181/S181/S177) (bsm-62614R) monoclonal antibody at 1:1000 dilution and 4°C overnight incubation. Followed by conjugated secondary antibody incubation at r.t. for 60 min.