

bsm-62605R**[Primary Antibody]****Cip4 Recombinant Rabbit mAb****BioSS**
ANTIBODIES

www.bioss.com.cn

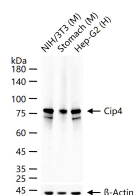
sales@bioss.com.cn

techsupport@bioss.com.cn

400-901-9800

— DATASHEET —

Host: Rabbit	Isotype: IgG	Applications: WB (1:500-2000) IHC-P (1:100-200) IHC-F (1:100-200) IF (1:100-200) Reactivity: Human, Mouse Predicted MW.: 68 Subcellular Location: Cell membrane ,Cytoplasm
Clonality: Recombinant		
GeneID: 9322	SWISS: Q15642	
Target: Cip4		
Immunogen: A synthesized peptide derived from human TRIP10: 1-34.		
Purification: affinity purified by Protein A		
Storage: 10mM phosphate buffered saline(pH 7.4) with 150mM sodium chloride, 0.05% BSA, 0.02% Proclin300 and 50% glycerol. Store at 4°C for short term. Store at -20°C for long term. Avoid repeated freeze/thaw cycles.		
Background: Required for translocation of GLUT4 to the plasma membrane in response to insulin signaling (By similarity).Required to coordinate membrane tubulation with reorganization of the actin cytoskeleton during endocytosis. Binds to lipids such as phosphatidylinositol 4,5-bisphosphate and phosphatidylserine and promotes membrane invagination and the formation of tubules.		

— VALIDATION IMAGES —

25 ug total protein per lane of various lysates (see on figure) probed with Cip4 monoclonal antibody, unconjugated (bsm-62605R) at 1:1000 dilution and 4°C overnight incubation. Followed by conjugated secondary antibody incubation at r.t. for 60 min.