

bsm-62602R**[Primary Antibody]****Bioss**
ANTIBODIES

www.bioss.com.cn

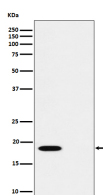
sales@bioss.com.cn

techsupport@bioss.com.cn

400-901-9800

phospho-PTS (Ser19) Recombinant Rabbit mAb**— DATASHEET —**

Host: Rabbit	Isotype: IgG	Applications: WB (1:1000-2000) IHC-P (1:100-200) IHC-F (1:100-200) IF (1:50-200) ICC/IF (1:50-200) Reactivity: Human Predicted MW.: 16 Subcellular Location: Cytoplasm
Clonality: Recombinant		
GeneID: 5805	SWISS: Q03393	
Target: PTS (Ser19)		
Immunogen: A synthesized peptide derived from human PTS around the phosphorylation site of S19: RI-pS-FS.		
Purification: affinity purified by Protein A		
Storage: 10mM phosphate buffered saline(pH 7.4) with 150mM sodium chloride, 0.05% BSA, 0.02% Proclin300 and 50% glycerol. Store at 4°C for short term. Store at -20°C for long term. Avoid repeated freeze/thaw cycles.		
Background: Involved in the biosynthesis of tetrahydrobiopterin, an essential cofactor of aromatic amino acid hydroxylases. Catalyzes the transformation of 7,8-dihydroneopterin triphosphate into 6-pyruvoyl tetrahydropterin.		

— VALIDATION IMAGES —

Western blot analysis of (1) HUVEC cell lysate; (2) HUVEC cell treated with Alkaline Phosphatase lysate. Using Phospho-PTS (Ser19) (bsm-62602R) monoclonal antibody at 1:1000 dilution and 4°C overnight incubation. Followed by conjugated secondary antibody incubation at r.t. for 60 min.