

bsm-62601R**[Primary Antibody]****STAMPB Recombinant Rabbit mAb****Bioss**
ANTIBODIES

www.bioss.com.cn

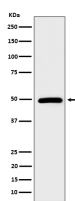
sales@bioss.com.cn

techsupport@bioss.com.cn

400-901-9800

— DATASHEET —

Host: Rabbit	Isotype: IgG	Applications: WB (1:1000-2000)
Clonality: Recombinant		Reactivity: Human
GeneID: 10617	SWISS: O95630	
Target: STAMPB		
Immunogen: A synthesized peptide derived from human STAMPB: 160-200.		Predicted MW.: 48
Purification: affinity purified by Protein A		Subcellular Location: Cell membrane ,Cytoplasm ,Nucleus
Storage: 10mM phosphate buffered saline(pH 7.4) with 150mM sodium chloride, 0.05% BSA, 0.02% Proclin300 and 50% glycerol. Store at 4°C for short term. Store at -20°C for long term. Avoid repeated freeze/thaw cycles.		
Background: Zinc metalloprotease that specifically cleaves 'Lys-63'-linked polyubiquitin chains.		

— VALIDATION IMAGES —

Western blot analysis of HeLa cell lysate. Using STAMPB (bsm-62601R) monoclonal antibody at 1:1000 dilution and 4°C overnight incubation. Followed by conjugated secondary antibody incubation at r.t. for 60 min.