

**bsm-62598R****[ Primary Antibody ]**

www.bioss.com.cn

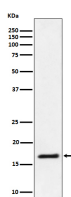
sales@bioss.com.cn

techsupport@bioss.com.cn

400-901-9800

**UBE2L3 Recombinant Rabbit mAb****— DATASHEET —**

<b>Host:</b> Rabbit	<b>Isotype:</b> IgG	<b>Applications:</b> <b>WB</b> (1:1000-2000) <b>IHC-P</b> (1:100-200) <b>IHC-F</b> (1:100-200) <b>IF</b> (1:50-200) <b>ICC/IF</b> (1:50-200)  <b>Reactivity:</b> Human, Mouse, Rat   <b>Predicted MW.:</b> 18  <b>Subcellular Location:</b> Cytoplasm ,Nucleus
<b>Clonality:</b> Recombinant		
<b>GeneID:</b> 7332	<b>SWISS:</b> P68036	
<b>Target:</b> UBE2L3		
<b>Immunogen:</b> A synthesized peptide derived from human UBE2L3: 130-154.		
<b>Purification:</b> affinity purified by Protein A		
<b>Storage:</b> 10mM phosphate buffered saline(pH 7.4) with 150mM sodium chloride, 0.05% BSA, 0.02% Proclin300 and 50% glycerol. Store at 4°C for short term. Store at -20°C for long term. Avoid repeated freeze/thaw cycles.		
<b>Background:</b> Ubiquitin-conjugating enzyme E2 that specifically acts with HECT-type and RBR family E3 ubiquitin-protein ligases. Does not function with most RING-containing E3 ubiquitin-protein ligases because it lacks intrinsic E3-independent reactivity with lysine: in contrast, it has activity with the RBR family E3 enzymes, such as PRKN, RNF31 and ARIH1, that function like RING-HECT hybrids. Accepts ubiquitin from the E1 complex and catalyzes its covalent attachment to other proteins. In vitro catalyzes 'Lys-11'-linked polyubiquitination.		

**— VALIDATION IMAGES —**

Western blot analysis of Jurkat cell lysate. Using UBE2L3 (bsm-62598R) monoclonal antibody at 1:1000 dilution and 4°C overnight incubation. Followed by conjugated secondary antibody incubation at r.t. for 60 min.