

**bsm-62596R****[ Primary Antibody ]**

## Cystatin B Recombinant Rabbit mAb

**Bioss**  
ANTIBODIES

www.bioss.com.cn

sales@bioss.com.cn

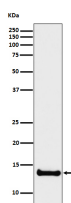
techsupport@bioss.com.cn

400-901-9800

### — DATASHEET —

<b>Host:</b> Rabbit	<b>Isotype:</b> IgG	<b>Applications:</b> <b>WB</b> (1:1000-2000) <b>IHC-P</b> (1:100-200) <b>IHC-F</b> (1:100-200) <b>IF</b> (1:100-200)
<b>Clonality:</b> Recombinant		
<b>GeneID:</b> 1476	<b>SWISS:</b> P04080	
<b>Target:</b> Cystatin B		<b>Reactivity:</b> Human, Rat
<b>Immunogen:</b> A synthesized peptide derived from human Cystatin B: 70-98.		
<b>Purification:</b> affinity purified by Protein A		
<b>Storage:</b> 10mM phosphate buffered saline(pH 7.4) with 150mM sodium chloride, 0.05% BSA, 0.02% Proclin300 and 50% glycerol. Store at 4°C for short term. Store at -20°C for long term. Avoid repeated freeze/thaw cycles.		<b>Predicted MW.:</b> 11
<b>Background:</b> This is an intracellular thiol proteinase inhibitor. Tightly binding reversible inhibitor of cathepsins L, H and B.		<b>Subcellular Location:</b> Secreted ,Cytoplasm ,Nucleus

### — VALIDATION IMAGES —



Western blot analysis of U87-MG cell lysate.  
Using Cystatin B (bsm-62596R) monoclonal antibody at 1:1000 dilution and 4°C overnight incubation. Followed by conjugated secondary antibody incubation at r.t. for 60 min.