

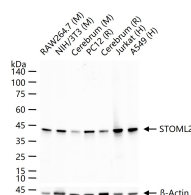
**bsm-62593R****[ Primary Antibody ]****BioSS**  
**ANTIBODIES**

www.bioss.com.cn

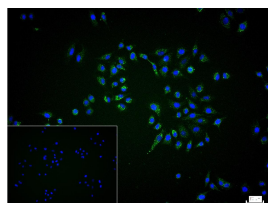
sales@bioss.com.cn

techsupport@bioss.com.cn

400-901-9800

**STOML2 Recombinant Rabbit mAb****DATASHEET****Host:** Rabbit**Isotype:** IgG**Clonality:** Recombinant**GeneID:** 30968**SWISS:** Q9UJZ1**Target:** STOML2**Immunogen:** A synthesized peptide derived from human SLP 2: 10-130.**Purification:** affinity purified by Protein A**Storage:** 10mM phosphate buffered saline(pH 7.4) with 150mM sodium chloride, 0.05% BSA, 0.02% Proclin300 and 50% glycerol. Store at 4°C for short term. Store at -20°C for long term. Avoid repeated freeze/thaw cycles.**Background:** Mitochondrial protein that probably regulates the biogenesis and the activity of mitochondria. Stimulates cardiolipin biosynthesis, binds cardiolipin-enriched membranes where it recruits and stabilizes some proteins including prohibitin and may therefore act in the organization of functional microdomains in mitochondrial membranes.**Applications:** WB (1:500-2000)**Flow-Cyt** (1:50-100)**ICC/IF** (1:50-200)**IP** (1:20-50)**Reactivity:** Human, Mouse, Rat**Predicted  
MW.:** 39**Subcellular  
Location:** Cell membrane ,Cytoplasm**VALIDATION IMAGES**

25 ug total protein per lane of various lysates (see on figure) probed with STOML2 monoclonal antibody, unconjugated (bsm-62593R) at 1:1000 dilution and 4°C overnight incubation. Followed by conjugated secondary antibody incubation at r.t. for 60 min.



4% Paraformaldehyde-fixed A549 (H) cell; Triton X-100 at r.t. for 20 min; Antibody incubation with (STOML2) monoclonal Antibody, unconjugated (bsm-62593R) 1:100, 90 min at 37°C; followed by conjugated Goat Anti-Rabbit IgG antibody (green, bs-60295G-BF488) at 37°C for 90 min, DAPI (blue, C02-04002) was used to stain the cell nuclei. PBS instead of the primary antibody was used as the blank control.