

bsm-62582R**[Primary Antibody]****Bioss**
ANTIBODIES

www.bioss.com.cn

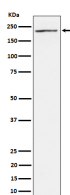
sales@bioss.com.cn

techsupport@bioss.com.cn

400-901-9800

MAP3K4 Recombinant Rabbit mAb**— DATASHEET —**

Host: Rabbit	Isotype: IgG	Applications: WB (1:1000-2000)
Clonality: Recombinant		IHC-P (1:100-200)
GeneID: 4216	SWISS: Q9Y6R4	IHC-F (1:100-200)
Target: MAP3K4		IF (1:100-200)
Immunogen: A synthesized peptide derived from human MEKK4: 170-200.		Reactivity: Human
Purification: affinity purified by Protein A		
Storage: 10mM phosphate buffered saline(pH 7.4) with 150mM sodium chloride, 0.05% BSA, 0.02% Proclin300 and 50% glycerol. Store at 4°C for short term. Store at -20°C for long term. Avoid repeated freeze/thaw cycles.		Predicted MW.: 182
Background: Component of a protein kinase signal transduction cascade. Activates the CSBP2, P38 and JNK MAPK pathways, but not the ERK pathway. Specifically phosphorylates and activates MAP2K4 and MAP2K6.		Subcellular Location: Cytoplasm

— VALIDATION IMAGES —

Western blot analysis of 293T cell lysate. Using MAP3K4 (bsm-62582R) monoclonal antibody at 1:1000 dilution and 4°C overnight incubation. Followed by conjugated secondary antibody incubation at r.t. for 60 min.