

bsm-62581R**[Primary Antibody]****BioSS**
ANTIBODIES

www.bioss.com.cn

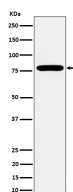
sales@bioss.com.cn

techsupport@bioss.com.cn

400-901-9800

GFPT1 Recombinant Rabbit mAb**— DATASHEET —**

Host: Rabbit	Isotype: IgG	Applications: WB (1:1000-2000) IHC-P (1:100-200) IHC-F (1:100-200) IF (1:100-200) IP (1:20-50) Reactivity: Human, Mouse, Rat Predicted MW.: 79 Subcellular Location: Cytoplasm
Clonality: Recombinant		
GeneID: 2673	SWISS: Q06210	
Target: GFPT1		
Immunogen: A synthesized peptide derived from human GFPT1: 620-660.		
Purification: affinity purified by Protein A		
Storage: 10mM phosphate buffered saline(pH 7.4) with 150mM sodium chloride, 0.05% BSA, 0.02% Proclin300 and 50% glycerol. Store at 4°C for short term. Store at -20°C for long term. Avoid repeated freeze/thaw cycles.		
Background: Controls the flux of glucose into the hexosamine pathway. Most likely involved in regulating the availability of precursors for N- and O-linked glycosylation of proteins. Regulates the circadian expression of clock genes BMAL1 and CRY1.		

— VALIDATION IMAGES —

Western blot analysis of MCF7 cell lysate. Using GFPT1 (bsm-62581R) monoclonal antibody at 1:1000 dilution and 4°C overnight incubation. Followed by conjugated secondary antibody incubation at r.t. for 60 min.