

bsm-62580R**[Primary Antibody]****Bioss**
ANTIBODIES

www.bioss.com.cn

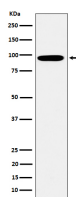
sales@bioss.com.cn

techsupport@bioss.com.cn

400-901-9800

Epsin 1 Recombinant Rabbit mAb**— DATASHEET —**

Host: Rabbit	Isotype: IgG	Applications: WB (1:1000-2000) ICC/IF (1:50-200)
Clonality: Recombinant		Reactivity: Human, Mouse, Rat
GeneID: 29924	SWISS: Q9Y6I3	
Target: Epsin 1		
Immunogen: A synthesized peptide derived from human Epsin 1: 450-490.		
Purification: affinity purified by Protein A		Predicted MW.: 60
Storage: 10mM phosphate buffered saline(pH 7.4) with 150mM sodium chloride, 0.05% BSA, 0.02% Proclin300 and 50% glycerol. Store at 4°C for short term. Store at -20°C for long term. Avoid repeated freeze/thaw cycles.		Subcellular Location: Cell membrane ,Cytoplasm ,Nucleus
Background: Binds to membranes enriched in phosphatidylinositol 4,5-bisphosphate (PtdIns(4,5)P2). Modifies membrane curvature and facilitates the formation of clathrin-coated invaginations.Regulates receptor-mediated endocytosis.		

— VALIDATION IMAGES —

Western blot analysis of K562 cell lysate. Using Epsin 1 (bsm-62580R) monoclonal antibody at 1:1000 dilution and 4°C overnight incubation. Followed by conjugated secondary antibody incubation at r.t. for 60 min.