

bsm-62577R**[Primary Antibody]****Bioss**
ANTIBODIES

www.bioss.com.cn

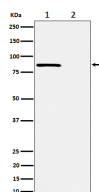
sales@bioss.com.cn

techsupport@bioss.com.cn

400-901-9800

phospho-Rad17 (Ser656) Recombinant Rabbit mAb**— DATASHEET —**

Host: Rabbit	Isotype: IgG	Applications: WB (1:1000-2000) IHC-P (1:100-200) IHC-F (1:100-200) IF (1:50-200) ICC/IF (1:50-200) Reactivity: Human Predicted MW.: 77 Subcellular Location: Nucleus
Clonality: Recombinant		
GeneID: 5884	SWISS: O75943	
Target: Rad17 (Ser656)		
Immunogen: A synthesized peptide derived from human RAD17 around the phosphorylation site of S656: PA-pS-QP.		
Purification: affinity purified by Protein A		
Storage: 10mM phosphate buffered saline(pH 7.4) with 150mM sodium chloride, 0.05% BSA, 0.02% Proclin300 and 50% glycerol. Store at 4°C for short term. Store at -20°C for long term. Avoid repeated freeze/thaw cycles.		
Background: Essential for sustained cell growth, maintenance of chromosomal stability, and ATR-dependent checkpoint activation upon DNA damage.		

— VALIDATION IMAGES —

Western blot analysis of (1) HeLa cell treated with CA lysate; (2) HeLa cell lysate. Using Phospho-Rad17 (Ser656) (bsm-62577R) monoclonal antibody at 1:1000 dilution and 4°C overnight incubation. Followed by conjugated secondary antibody incubation at r.t. for 60 min.