

bsm-62572R**[Primary Antibody]****RPS6KA3 Recombinant Rabbit mAb****BioSS**
ANTIBODIES

www.bioss.com.cn

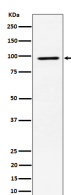
sales@bioss.com.cn

techsupport@bioss.com.cn

400-901-9800

— DATASHEET —

Host: Rabbit	Isotype: IgG	Applications: WB (1:1000-2000) IHC-P (1:100-200) IHC-F (1:100-200) IF (1:100-200) Flow-Cyt (1:50-100)
Clonality: Recombinant		Reactivity: Human, Mouse, Rat
GeneID: 6197	SWISS: P51812	
Target: RPS6KA3		
Immunogen: A synthesized peptide derived from human p90 S6K alpha 3: 670-700.		
Purification: affinity purified by Protein A		
Storage: 10mM phosphate buffered saline(pH 7.4) with 150mM sodium chloride, 0.05% BSA, 0.02% Proclin300 and 50% glycerol. Store at 4°C for short term. Store at -20°C for long term. Avoid repeated freeze/thaw cycles.		Predicted MW.: 84
Background: Serine/threonine-protein kinase that acts downstream of ERK (MAPK1/ERK2 and MAPK3/ERK1) signaling and mediates mitogenic and stress-induced activation of the transcription factors CREB1, ETV1/ER81 and NR4A1/NUR77, regulates translation through RPS6 and EIF4B phosphorylation, and mediates cellular proliferation, survival, and differentiation by modulating mTOR signaling and repressing pro-apoptotic function of BAD and DAPK1.		Subcellular Location: Cytoplasm ,Nucleus

— VALIDATION IMAGES —

Western blot analysis of MCF7 cell lysate. Using RPS6KA3 (bsm-62572R) monoclonal antibody at 1:1000 dilution and 4°C overnight incubation. Followed by conjugated secondary antibody incubation at r.t. for 60 min.