

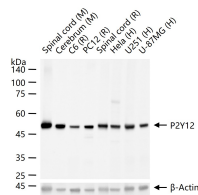
**bsm-62569R****[ Primary Antibody ]****P2Y12 Recombinant Rabbit mAb****BioSS**  
**ANTIBODIES**

www.bioss.com.cn

sales@bioss.com.cn

techsupport@bioss.com.cn

400-901-9800

**— DATASHEET —****Host:** Rabbit**Isotype:** IgG**Clonality:** Recombinant**CloneNo.:** 17H15**GeneID:** 64805**SWISS:** Q9H244**Target:** P2Y12**Immunogen:** A synthesized peptide derived from human P2Y12: 120-347.**Purification:** affinity purified by Protein A**Storage:** 10mM phosphate buffered saline(pH 7.4) with 150mM sodium chloride, 0.05% BSA, 0.02% Proclin300 and 50% glycerol. Store at 4°C for short term. Store at -20°C for long term. Avoid repeated freeze/thaw cycles.**Background:** Receptor for ADP and ATP coupled to G-proteins that inhibit the adenylyl cyclase second messenger system. Not activated by UDP and UTP. Required for normal platelet aggregation and blood coagulation.**Applications:** **WB** (1:500-2000)  
**IP** (1:20-50)**Reactivity:** Human, Mouse, Rat**Predicted**  
**MW.:** 39**Subcellular**  
**Location:** Cell membrane**— VALIDATION IMAGES —**

25 ug total protein per lane of various lysates (see on figure) probed with P2Y12 monoclonal antibody, unconjugated (bsm-62569R) at 1:2000 dilution and 4°C overnight incubation. Followed by conjugated secondary antibody incubation at r.t. for 60 min.