

**bsm-62567R****[ Primary Antibody ]**

www.bioss.com.cn

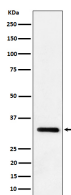
sales@bioss.com.cn

techsupport@bioss.com.cn

400-901-9800

**IL33 Recombinant Rabbit mAb****— DATASHEET —**

<b>Host:</b> Rabbit	<b>Isotype:</b> IgG	<b>Applications:</b> <b>WB</b> (1:500-2000) <b>IHC-P</b> (1:50-200) <b>IHC-F</b> (1:50-200) <b>IF</b> (1:50-200) <b>ICC/IF</b> (1:50-200)  <b>Reactivity:</b> Mouse, Rat  <b>Predicted MW.:</b> 30  <b>Subcellular Location:</b> Secreted ,Cytoplasm ,Nucleus
<b>Clonality:</b> Recombinant		
<b>GeneID:</b> 77125	<b>SWISS:</b> Q8BVZ5	
<b>Target:</b> IL33		
<b>Immunogen:</b> A synthesized peptide derived from mouse IL 33: 100-280.		
<b>Purification:</b> affinity purified by Protein A		
<b>Storage:</b> 10mM phosphate buffered saline(pH 7.4) with 150mM sodium chloride, 0.05% BSA, 0.02% Proclin300 and 50% glycerol. Store at 4°C for short term. Store at -20°C for long term. Avoid repeated freeze/thaw cycles.		
<b>Background:</b> Cytokine that binds to and signals through the IL1RL1/ST2 receptor which in turn activates NF-kappa-B and MAPK signaling pathways in target cells. Involved in the maturation of Th2 cells inducing the secretion of T-helper type 2-associated cytokines.		

**— VALIDATION IMAGES —**

Western blot analysis of mouse lung cell lysate.  
Using IL33 (bsm-62567R) monoclonal antibody  
at 1:1000 dilution and 4°C overnight incubation.  
Followed by conjugated secondary antibody  
incubation at r.t. for 60 min.