

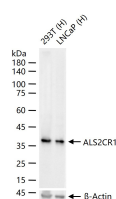
bsm-62564R**[Primary Antibody]****Bioss**
ANTIBODIES

www.bioss.com.cn

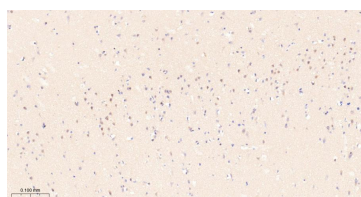
sales@bioss.com.cn

techsupport@bioss.com.cn

400-901-9800

ALS2CR1 Recombinant Rabbit mAb**DATASHEET****Host:** Rabbit**Isotype:** IgG**Clonality:** Recombinant**CloneNo.:** 4D12**GeneID:** 60491**SWISS:** Q9GZT8**Target:** ALS2CR1**Immunogen:** A synthesized peptide derived from human NIF3L1: 310-350.**Purification:** affinity purified by Protein A**Storage:** 10mM phosphate buffered saline(pH 7.4) with 150mM sodium chloride, 0.05% BSA, 0.02% Proclin300 and 50% glycerol. Store at 4°C for short term. Store at -20°C for long term. Avoid repeated freeze/thaw cycles.**Background:** May function as a transcriptional corepressor through its interaction with COPS2, negatively regulating the expression of genes involved in neuronal differentiation.**Applications:** **WB** (1:500-2000)
IHC-P (1:100-500)
IHC-F (1:100-500)
IF (1:100-500)
ICC/IF (1:50-200)**Reactivity:** Human**Predicted
MW.:** 42**Subcellular
Location:** Cytoplasm**VALIDATION IMAGES**

25 ug total protein per lane of various lysates (see on figure) probed with ALS2CR1 monoclonal antibody, unconjugated (bsm-62564R) at 1:1000 dilution and 4°C overnight incubation. Followed by conjugated secondary antibody incubation at r.t. for 60 min.



Paraformaldehyde-fixed, paraffin embedded Human Cerebrum; Antigen retrieval by boiling in sodium citrate buffer (pH6.0) for 15 min; Antibody incubation with ALS2CR1 Monoclonal Antibody, Unconjugated(bsm-62564R) at 1:200 overnight at 4°C, followed by conjugation to the bs-0295G-HRP and DAB (C-0010) staining.