

bsm-62562R**[Primary Antibody]****Bioss**
ANTIBODIES

www.bioss.com.cn

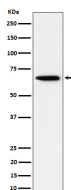
sales@bioss.com.cn

techsupport@bioss.com.cn

400-901-9800

SCP2 Recombinant Rabbit mAb**— DATASHEET —**

Host: Rabbit	Isotype: IgG	Applications: WB (1:1000-2000) IHC-P (1:100-200) IHC-F (1:100-200) IF (1:50-200) ICC/IF (1:50-200) Reactivity: Human, Mouse, Rat Predicted MW.: 59 Subcellular Location: Cytoplasm
Clonality: Recombinant		
GeneID: 6342	SWISS: P22307	
Target: SCP2		
Immunogen: A synthesized peptide derived from human Sterol carrier protein 2: 14-64.		
Purification: affinity purified by Protein A		
Storage: 10mM phosphate buffered saline(pH 7.4) with 150mM sodium chloride, 0.05% BSA, 0.02% Proclin300 and 50% glycerol. Store at 4°C for short term. Store at -20°C for long term. Avoid repeated freeze/thaw cycles.		
Background: Mediates in vitro the transfer of all common phospholipids, cholesterol and gangliosides between membranes. May play a role in regulating steroidogenesis.		

— VALIDATION IMAGES —

Western blot analysis of HepG2 cell lysate. Using SCP2 (bsm-62562R) monoclonal antibody at 1:1000 dilution and 4°C overnight incubation. Followed by conjugated secondary antibody incubation at r.t. for 60 min.