

bsm-62561R**[Primary Antibody]****Bioss**
ANTIBODIES

www.bioss.com.cn

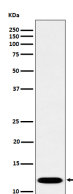
sales@bioss.com.cn

techsupport@bioss.com.cn

400-901-9800

PCBD1 Recombinant Rabbit mAb**— DATASHEET —**

Host: Rabbit	Isotype: IgG	Applications: WB (1:1000-2000)
Clonality: Recombinant		IHC-P (1:100-200)
GeneID: 5092	SWISS: P61457	IHC-F (1:100-200)
Target: PCBD1		IF (1:100-200)
Immunogen: A synthesized peptide derived from human PHS: 10-30.		Reactivity: Human, Mouse, Rat
Purification: affinity purified by Protein A		
Storage: 10mM phosphate buffered saline(pH 7.4) with 150mM sodium chloride, 0.05% BSA, 0.02% Proclin300 and 50% glycerol. Store at 4°C for short term. Store at -20°C for long term. Avoid repeated freeze/thaw cycles.		Predicted MW.: 12
Background: Involved in tetrahydrobiopterin biosynthesis. Seems to both prevent the formation of 7-pterins and accelerate the formation of quinonoid-BH2. Coactivator for HNF1A-dependent transcription.		Subcellular Location: Cytoplasm ,Nucleus

— VALIDATION IMAGES —

Western blot analysis of Caco-2 cell lysate. Using PCBD1 (bsm-62561R) monoclonal antibody at 1:1000 dilution and 4°C overnight incubation. Followed by conjugated secondary antibody incubation at r.t. for 60 min.