

bsm-62559R**[Primary Antibody]****BioSS**
ANTIBODIES

www.bioss.com.cn

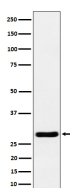
sales@bioss.com.cn

techsupport@bioss.com.cn

400-901-9800

Calcipressin 1/DSCR 1 Recombinant Rabbit mAb**— DATASHEET —**

Host: Rabbit	Isotype: IgG	Applications: WB (1:500-2000)
Clonality: Recombinant		Reactivity: Human, Mouse, Rat
GeneID: 1827	SWISS: P53805	
Target: Calcipressin 1/DSCR 1		
Immunogen: A synthesized peptide derived from human Calcipressin 1: 44-110.		Predicted MW.: 28
Purification: affinity purified by Protein A		Subcellular Location: Cytoplasm ,Nucleus
Storage: 10mM phosphate buffered saline(pH 7.4) with 150mM sodium chloride, 0.05% BSA, 0.02% Proclin300 and 50% glycerol. Store at 4°C for short term. Store at -20°C for long term. Avoid repeated freeze/thaw cycles.		
Background: Inhibits calcineurin-dependent transcriptional responses by binding to the catalytic domain of calcineurin A. Could play a role during central nervous system development.		

— VALIDATION IMAGES —

Western blot analysis of mouse heart cell lysate.
Using Calcipressin 1/DSCR 1 (bsm-62559R)
monoclonal antibody at 1:1000 dilution and 4°C
overnight incubation. Followed by conjugated
secondary antibody incubation at r.t. for 60 min.