

**bsm-62555R****[ Primary Antibody ]****BioSS**  
ANTIBODIES

www.bioss.com.cn

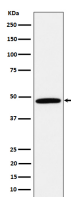
sales@bioss.com.cn

techsupport@bioss.com.cn

400-901-9800

**CALU Recombinant Rabbit mAb****— DATASHEET —**

<b>Host:</b> Rabbit	<b>Isotype:</b> IgG	<b>Applications:</b> <b>WB</b> (1:1000-2000) <b>IHC-P</b> (1:100-200) <b>IHC-F</b> (1:100-200) <b>IF</b> (1:100-200)  <b>Reactivity:</b> Human, Mouse, Rat  <b>Predicted MW.:</b> 37  <b>Subcellular Location:</b> Secreted ,Cell membrane
<b>Clonality:</b> Recombinant		
<b>GeneID:</b> 813	<b>SWISS:</b> O43852	
<b>Target:</b> CALU		
<b>Immunogen:</b> A synthesized peptide derived from human Calumenin: 265-300.		
<b>Purification:</b> affinity purified by Protein A		
<b>Storage:</b> 10mM phosphate buffered saline(pH 7.4) with 150mM sodium chloride, 0.05% BSA, 0.02% Proclin300 and 50% glycerol. Store at 4°C for short term. Store at -20°C for long term. Avoid repeated freeze/thaw cycles.		
<b>Background:</b> Involved in regulation of vitamin K-dependent carboxylation of multiple N-terminal glutamate residues. Seems to inhibit gamma-carboxylase GGcX. Binds 7 calcium ions with a low affinity.		

**— VALIDATION IMAGES —**

Western blot analysis of 293T cell lysate. Using CALU (bsm-62555R) monoclonal antibody at 1:1000 dilution and 4°C overnight incubation. Followed by conjugated secondary antibody incubation at r.t. for 60 min.