

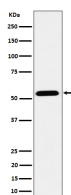
**bsm-62554R****[ Primary Antibody ]****ENPP5 Recombinant Rabbit mAb****BioSS**  
**ANTIBODIES**

www.bioss.com.cn

sales@bioss.com.cn

techsupport@bioss.com.cn

400-901-9800

**— DATASHEET —****Host:** Rabbit**Isotype:** IgG**Clonality:** Recombinant**GeneID:** 59084**SWISS:** Q9UJA9**Target:** ENPP5**Immunogen:** A synthesized peptide derived from human ENPP5: 400-477.**Purification:** affinity purified by Protein A**Storage:** 10mM phosphate buffered saline(pH 7.4) with 150mM sodium chloride, 0.05% BSA, 0.02% Proclin300 and 50% glycerol. Store at 4°C for short term. Store at -20°C for long term. Avoid repeated freeze/thaw cycles.**Background:** Can hydrolyze NAD but cannot hydrolyze nucleotide di- and triphosphates. Lacks lysopholipase D activity. May play a role in neuronal cell communication.**Applications:** **WB** (1:1000-2000)**ICC/IF** (1:50-200)**Reactivity:** Human, Mouse, Rat**Predicted  
MW.:** 55**Subcellular  
Location:** Secreted ,Cell membrane**— VALIDATION IMAGES —**

Western blot analysis of MCF7 cell lysate. Using ENPP5 (bsm-62554R) monoclonal antibody at 1:1000 dilution and 4°C overnight incubation. Followed by conjugated secondary antibody incubation at r.t. for 60 min.