

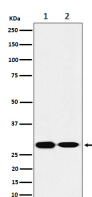
bsm-62550R**[Primary Antibody]****SNAP29 Recombinant Rabbit mAb****BioSS**
ANTIBODIES

www.bioss.com.cn

sales@bioss.com.cn

techsupport@bioss.com.cn

400-901-9800

— DATASHEET —**Host:** Rabbit**Isotype:** IgG**Clonality:** Recombinant**GeneID:** 9342**SWISS:** O95721**Target:** SNAP29**Immunogen:** A synthesized peptide derived from human SNAP29: 200-258.**Purification:** affinity purified by Protein A**Storage:** 10mM phosphate buffered saline(pH 7.4) with 150mM sodium chloride, 0.05% BSA, 0.02% Proclin300 and 50% glycerol. Store at 4°C for short term. Store at -20°C for long term. Avoid repeated freeze/thaw cycles.**Background:** SNAREs, soluble N-ethylmaleimide-sensitive factor-attachment protein receptors, are essential proteins for fusion of cellular membranes. SNAREs localized on opposing membranes assemble to form a trans-SNARE complex, an extended, parallel four alpha-helical bundle that drives membrane fusion.**Applications:** **WB** (1:1000-2000)
IP (1:20-50)**Reactivity:** Human, Mouse, Rat**Predicted**
MW.: 29**Subcellular**
Location: Cell membrane ,Cytoplasm**— VALIDATION IMAGES —**

Western blot analysis of (1) HeLa cell lysate; (2) Mouse brain lysate. Using SNAP29 (bsm-62550R) monoclonal antibody at 1:1000 dilution and 4°C overnight incubation. Followed by conjugated secondary antibody incubation at r.t. for 60 min.