

bsm-62548R

[Primary Antibody]

Syntaxin 16 Recombinant Rabbit mAb

Bioss
ANTIBODIES

www.bioss.com.cn

sales@bioss.com.cn

techsupport@bioss.com.cn

400-901-9800

— DATASHEET —

Host: Rabbit

Clonality: Recombinant

GeneID: 8675

Target: Syntaxin 16

Immunogen: A synthesized peptide derived from human Syntaxin 16: 50-90.

Purification: affinity purified by Protein A

Storage: 10mM phosphate buffered saline(pH 7.4) with 150mM sodium chloride, 0.05% BSA, 0.02% Proclin300 and 50% glycerol. Store at 4°C for short term. Store at -20°C for long term. Avoid repeated freeze/thaw cycles.

Background: SNARE involved in vesicular transport from the late endosomes to the trans-Golgi network.

Isotype: IgG

CloneNo.: 12C10

SWISS: O14662

Applications: WB (1:500-2000)

IHC-P (1:50-200)

IHC-F (1:50-200)

IF (1:50-200)

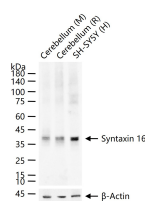
Flow-Cyt (1:50-100)

ICC/IF (1:50-200)

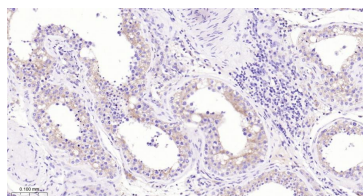
Reactivity: Human, Mouse, Rat

Predicted MW.: 37

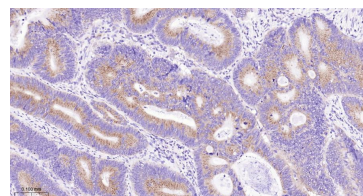
— VALIDATION IMAGES —



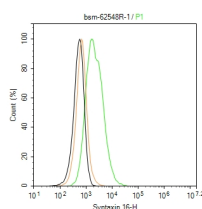
25 ug total protein per lane of various lysates (see on figure) probed with Syntaxin 16 monoclonal antibody, unconjugated (bsm-62548R) at 1:1000 dilution and 4°C overnight incubation. Followed by conjugated secondary antibody incubation at r.t. for 60 min.



Paraformaldehyde-fixed, paraffin embedded Human Testis; Antigen retrieval by boiling in sodium citrate buffer (pH6.0) for 15 min; The section was incubated with Syntaxin 16 Recombinant Monoclonal Antibody, Unconjugated (bsm-62548R) at 1:200 overnight at 4°C, followed by conjugation to the bs-0295G-HRP and DAB (C-0010) staining.



Paraformaldehyde-fixed, paraffin embedded Human Colon Cancer; Antigen retrieval by boiling in sodium citrate buffer (pH6.0) for 15 min; The section was incubated with Syntaxin 16 Recombinant Monoclonal Antibody, Unconjugated (bsm-62548R) at 1:200 overnight at 4°C, followed by conjugation to the bs-0295G-HRP and DAB (C-0010) staining.



The SH-SY5Y (H) cells were fixed with 4% PFA (10 min at r.t.) and then permeabilized with 90% ice-cold methanol for 20 min at -20°C, the cells then were incubated in 5% BSA to block non-specific protein-protein interactions (30 min at r.t.), followed by secondary antibody incubation for 40 min at room temperature. Primary Antibody (green): Rabbit Anti-Syntaxin 16 antibody (bsm-62548R, 1:100); Isotype Control (orange): Rabbit IgG (bs-0295P). Blank control (black): PBS. Acquisition of 20,000 events was performed.