

**bsm-62547R**

**[ Primary Antibody ]**

## RPL13 Recombinant Rabbit mAb

**BioSS**  
ANTIBODIES

www.bioss.com.cn

sales@bioss.com.cn

techsupport@bioss.com.cn

400-901-9800

### — DATASHEET —

**Host:** Rabbit

**Isotype:** IgG

**Clonality:** Recombinant

**GeneID:** 6137

**SWISS:** P26373

**Target:** RPL13

**Immunogen:** A synthesized peptide derived from human RPL13: 1-20.

**Purification:** affinity purified by Protein A

**Storage:** 10mM phosphate buffered saline(pH 7.4) with 150mM sodium chloride, 0.05% BSA, 0.02% Proclin300 and 50% glycerol.  
Store at 4°C for short term. Store at -20°C for long term. Avoid repeated freeze/thaw cycles.

**Background:** Belongs to the ribosomal protein L13e family.

**Applications:** WB (1:1000-2000)

**IHC-P** (1:100-200)

**IHC-F** (1:100-200)

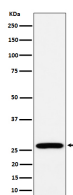
**IF** (1:50-200)

**ICC/IF** (1:50-200)

**Reactivity:** Human, Mouse

**Predicted MW.:** 24

### — VALIDATION IMAGES —



Western blot analysis of MCF7 cell lysate. Using RPL13 (bsm-62547R) monoclonal antibody at 1:1000 dilution and 4°C overnight incubation. Followed by conjugated secondary antibody incubation at r.t. for 60 min.