

bsm-62545R**[Primary Antibody]****Bioss**
ANTIBODIES

www.bioss.com.cn

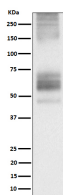
sales@bioss.com.cn

techsupport@bioss.com.cn

400-901-9800

Somatostatin Receptor 1 Recombinant Rabbit mAb**— DATASHEET —**

Host: Rabbit	Isotype: IgG	Applications: WB (1:1000-2000) ICC/IF (1:50-200)
Clonality: Recombinant		Reactivity: Human
GeneID: 6751	SWISS: P30872	
Target: Somatostatin Receptor 1		
Immunogen: A synthesized peptide derived from human SSTR1: 350-391.		
Purification: affinity purified by Protein A		Predicted MW.: 43
Storage: 10mM phosphate buffered saline(pH 7.4) with 150mM sodium chloride, 0.05% BSA, 0.02% Proclin300 and 50% glycerol. Store at 4°C for short term. Store at -20°C for long term. Avoid repeated freeze/thaw cycles.		Subcellular Location: Cell membrane
Background: Receptor for somatostatin with higher affinity for somatostatin-14 than -28. This receptor is coupled via pertussis toxin sensitive G proteins to inhibition of adenylyl cyclase.		

— VALIDATION IMAGES —

Western blot analysis of 293T transfected with Somatostatin Receptor 1 cell lysate. Using Somatostatin Receptor 1 (bsm-62545R) monoclonal antibody at 1:1000 dilution and 4°C overnight incubation. Followed by conjugated secondary antibody incubation at r.t. for 60 min.