

bsm-62535R**[Primary Antibody]****TAF15/RBP56 Recombinant Rabbit mAb****BioSS**
ANTIBODIES

www.bioss.com.cn

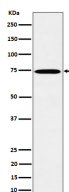
sales@bioss.com.cn

techsupport@bioss.com.cn

400-901-9800

— DATASHEET —

Host: Rabbit	Isotype: IgG	Applications: WB (1:1000-2000) IHC-P (1:100-200) IHC-F (1:100-200) IF (1:50-200) Flow-Cyt (1:50-100) ICC/IF (1:50-200) Reactivity: Human, Mouse, Rat Predicted MW.: 62 Subcellular Location: Cytoplasm ,Nucleus
Clonality: Recombinant		
GeneID: 8148	SWISS: Q92804	
Target: TAF15/RBP56		
Immunogen: A synthesized peptide derived from human TAF15: 565-592.		
Purification: affinity purified by Protein A		
Storage: 10mM phosphate buffered saline(pH 7.4) with 150mM sodium chloride, 0.05% BSA, 0.02% Proclin300 and 50% glycerol. Store at 4°C for short term. Store at -20°C for long term. Avoid repeated freeze/thaw cycles.		
Background: RNA and ssDNA-binding protein that may play specific roles during transcription initiation at distinct promoters. Can enter the preinitiation complex together with the RNA polymerase II (Pol II).		

— VALIDATION IMAGES —

Western blot analysis of HeLa cell lysate. Using TAF15/RBP56 (bsm-62535R) monoclonal antibody at 1:1000 dilution and 4°C overnight incubation. Followed by conjugated secondary antibody incubation at r.t. for 60 min.