

**bsm-62533R****[ Primary Antibody ]****SCIN Recombinant Rabbit mAb****BioSS**  
**ANTIBODIES**

www.bioss.com.cn

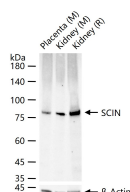
sales@bioss.com.cn

techsupport@bioss.com.cn

400-901-9800

**— DATASHEET —**

<b>Host:</b> Rabbit	<b>Isotype:</b> IgG	<b>Applications:</b> <b>WB</b> (1:500-2000) <b>IHC-P</b> (1:100-200) <b>IHC-F</b> (1:100-200) <b>IF</b> (1:100-200)  <b>Reactivity:</b> Mouse, Rat (predicted: Human)  <b>Predicted MW.:</b> 80  <b>Subcellular Location:</b> Cytoplasm
<b>Clonality:</b> Recombinant	<b>CloneNo.:</b> 10B6	
<b>GeneID:</b> 85477	<b>SWISS:</b> Q9Y6U3	
<b>Target:</b> SCIN		
<b>Immunogen:</b> A synthesized peptide derived from human Scinderin: 650-715.		
<b>Purification:</b> affinity purified by Protein A		
<b>Storage:</b> 10mM phosphate buffered saline(pH 7.4) with 150mM sodium chloride, 0.05% BSA, 0.02% Proclin300 and 50% glycerol. Store at 4°C for short term. Store at -20°C for long term. Avoid repeated freeze/thaw cycles.		
<b>Background:</b> Ca <sup>2+</sup> -dependent actin filament-severing protein that has a regulatory function in exocytosis by affecting the organization of the microfilament network underneath the plasma membrane. Severing activity is inhibited by phosphatidylinositol 4,5-bis-phosphate. In vitro, also has barbed end capping and nucleating activities in the presence of Ca <sup>2+</sup> . Required for megakaryocyte differentiation, maturation, polyploidization and apoptosis with the release of platelet-like particles.		

**— VALIDATION IMAGES —**

25 ug total protein per lane of various lysates (see on figure) probed with SCIN monoclonal antibody, unconjugated (bsm-62533R) at 1:1000 dilution and 4°C overnight incubation. Followed by conjugated secondary antibody incubation at r.t. for 60 min.