

bsm-62532R**[Primary Antibody]****Spermine synthase Recombinant Rabbit mAb****BioSS**
ANTIBODIES

www.bioss.com.cn

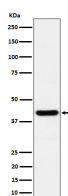
sales@bioss.com.cn

techsupport@bioss.com.cn

400-901-9800

— DATASHEET —

Host: Rabbit	Isotype: IgG	Applications: WB (1:1000-2000) ICC/IF (1:50-200)
Clonality: Recombinant		Reactivity: Human, Mouse, Rat
GeneID: 6611	SWISS: P52788	
Target: Spermine synthase		
Immunogen: A synthesized peptide derived from human SPMSY: 100-150.		Predicted MW.: 41
Purification: affinity purified by Protein A		
Storage: 10mM phosphate buffered saline(pH 7.4) with 150mM sodium chloride, 0.05% BSA, 0.02% Proclin300 and 50% glycerol. Store at 4°C for short term. Store at -20°C for long term. Avoid repeated freeze/thaw cycles.		
Background: Catalyzes the production of spermine from spermidine and decarboxylated S-adenosylmethionine (dcSAM).		

— VALIDATION IMAGES —

Western blot analysis of HeLa cell lysate. Using Spermine synthase (bsm-62532R) monoclonal antibody at 1:1000 dilution and 4°C overnight incubation. Followed by conjugated secondary antibody incubation at r.t. for 60 min.