

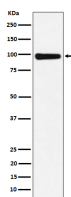
bsm-62531R**[Primary Antibody]****CHM Recombinant Rabbit mAb****BioSS**
ANTIBODIES

www.bioss.com.cn

sales@bioss.com.cn

techsupport@bioss.com.cn

400-901-9800

— DATASHEET —**Host:** Rabbit**Isotype:** IgG**Clonality:** Recombinant**GeneID:** 1121**SWISS:** P24386**Target:** CHM**Immunogen:** A synthesized peptide derived from human CHM: 49-81.**Purification:** affinity purified by Protein A**Storage:** 10mM phosphate buffered saline(pH 7.4) with 150mM sodium chloride, 0.05% BSA, 0.02% Proclin300 and 50% glycerol.
Store at 4°C for short term. Store at -20°C for long term. Avoid repeated freeze/thaw cycles.**Background:** Binds unprenylated Rab proteins, presents it to the catalytic Rab GGTase dimer, and remains bound to it after the geranylgeranyl transfer reaction.**Applications:** **WB** (1:1000-2000)
ICC/IF (1:50-200)**Reactivity:** Human, Mouse, Rat**Predicted
MW.:** 73**Subcellular
Location:** Cytoplasm**— VALIDATION IMAGES —**

Western blot analysis of 293T cell lysate. Using CHM (bsm-62531R) monoclonal antibody at 1:1000 dilution and 4°C overnight incubation. Followed by conjugated secondary antibody incubation at r.t. for 60 min.