

bsm-62529R**[Primary Antibody]**

www.bioss.com.cn

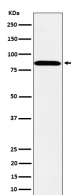
sales@bioss.com.cn

techsupport@bioss.com.cn

400-901-9800

PPM1E Recombinant Rabbit mAb**— DATASHEET —**

Host: Rabbit	Isotype: IgG	Applications: WB (1:1000-2000) Flow-Cyt (1:50-100)
Clonality: Recombinant		Reactivity: Human
GeneID: 22843	SWISS: Q8WY54	
Target: PPM1E		
Immunogen: A synthesized peptide derived from human Protein phosphatase 1E: 534-563.		Predicted MW.: 84
Purification: affinity purified by Protein A		Subcellular Location: Cytoplasm ,Nucleus
Storage: 10mM phosphate buffered saline(pH 7.4) with 150mM sodium chloride, 0.05% BSA, 0.02% Proclin300 and 50% glycerol. Store at 4°C for short term. Store at -20°C for long term. Avoid repeated freeze/thaw cycles.		
Background: Protein phosphatase that inactivates multifunctional CaM kinases such as CAMK4 and CAMK2. Dephosphorylates and inactivates PAK. May play a role in the inhibition of actin fiber stress breakdown and in morphological changes driven by TNK2/CDC42. Dephosphorylates PRKAA2.		

— VALIDATION IMAGES —

Western blot analysis of SH-SY5Y cell lysate.
Using PPM1E (bsm-62529R) monoclonal antibody at 1:1000 dilution and 4°C overnight incubation. Followed by conjugated secondary antibody incubation at r.t. for 60 min.