

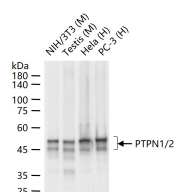
bsm-62527R**[Primary Antibody]****BioSS**
ANTIBODIES

www.bioss.com.cn

sales@bioss.com.cn

techsupport@bioss.com.cn

400-901-9800

PTPN1/2 Recombinant Rabbit mAb**— DATASHEET —****Host:** Rabbit**Isotype:** IgG**Clonality:** Recombinant**CloneNo.:** 5H9**GeneID:** 5770**SWISS:** P18031**Target:** PTPN1/2**Immunogen:** A synthesized peptide derived from human PTPN1: 11-66.**Purification:** affinity purified by Protein A**Storage:** 10mM phosphate buffered saline(pH 7.4) with 150mM sodium chloride, 0.05% BSA, 0.02% Proclin300 and 50% glycerol. Store at 4°C for short term. Store at -20°C for long term. Avoid repeated freeze/thaw cycles.**Background:** Tyrosine-protein phosphatase which acts as a regulator of endoplasmic reticulum unfolded protein response. Mediates dephosphorylation of EIF2AK3/PERK; inactivating the protein kinase activity of EIF2AK3/PERK. May play an important role in CKII- and p60c-src-induced signal transduction cascades.**Applications:** **WB** (1:500-2000)**Flow-Cyt** (1:50-100)**IP** (1:20-50)**Reactivity:** Human, Mouse**Predicted
MW.:** 50,48**Subcellular
Location:** Cell membrane ,Cytoplasm**— VALIDATION IMAGES —**

25 ug total protein per lane of various lysates (see on figure) probed with bsm-62527R monoclonal antibody, unconjugated (bsm-62527R) at 1:1000 dilution and 4°C overnight incubation. Followed by conjugated secondary antibody incubation at r.t. for 60 min.